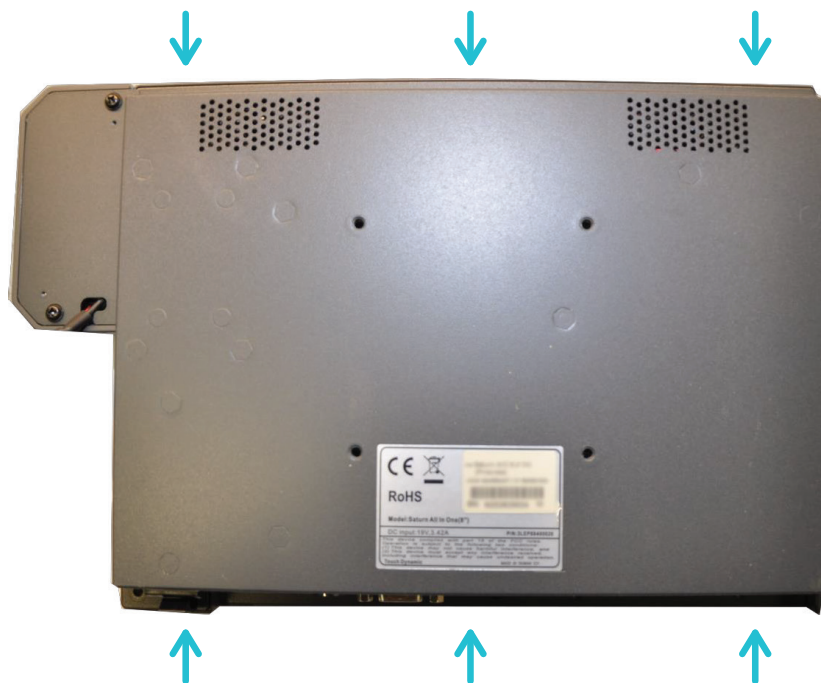


TOUCH DYNAMIC INC.

Saturn All-in-One HDD Replacement WITH HANNSTAR LCD

- 1 Power off the unit and disconnect all the cables. Place the unit on the flat surface and ensure nothing can damage/scratch the bezel and the touch glass. Remove the 6 screws from the rear cover.

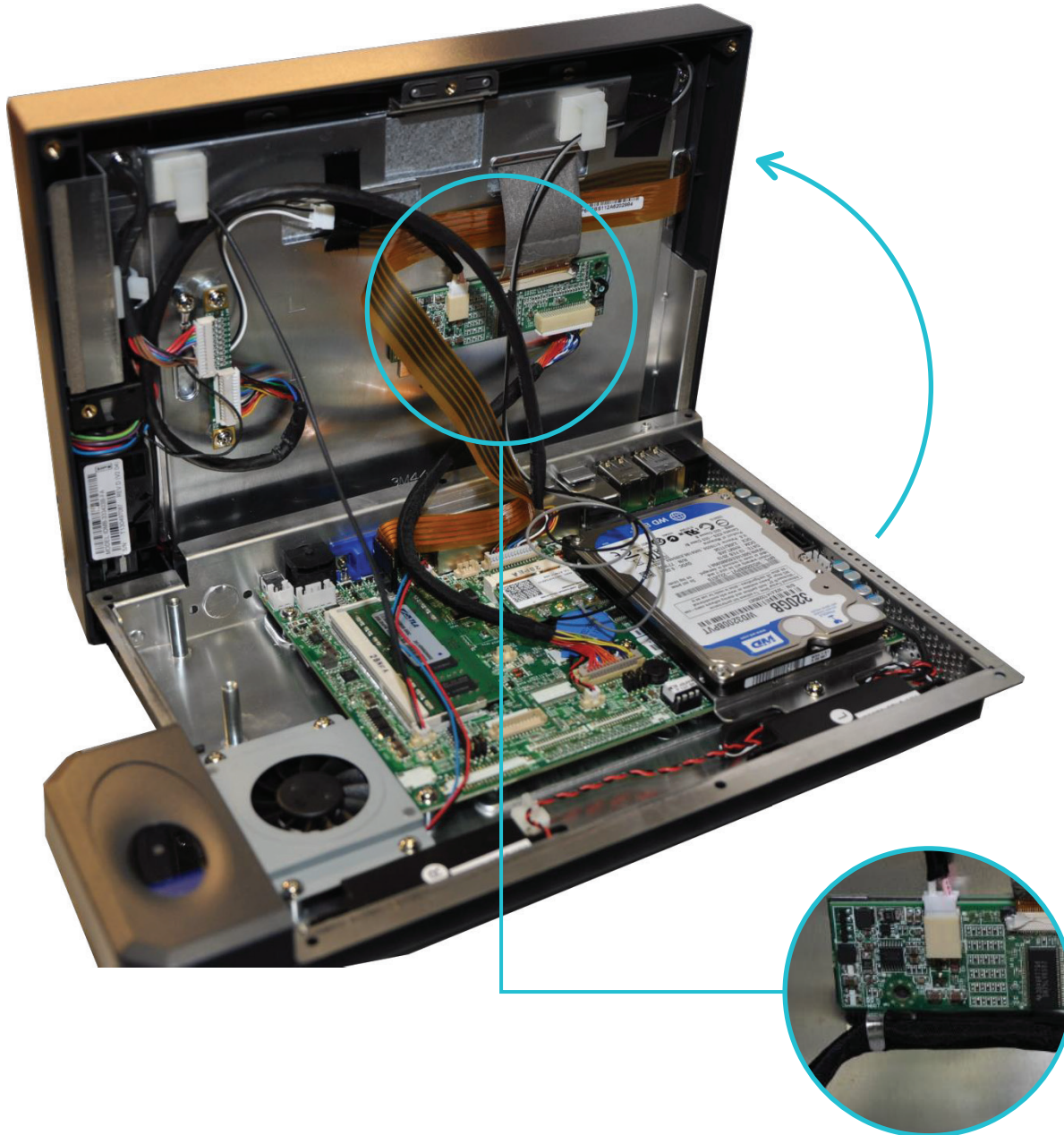


- 2 Place the unit upside down in front of you as shown in the picture below.



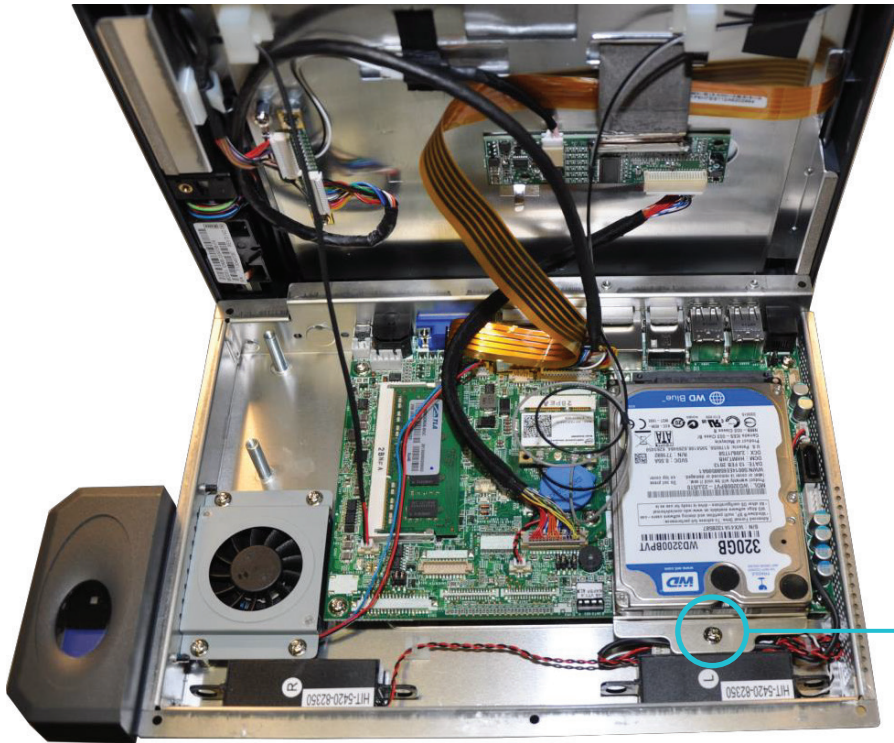
5/7/2013

- 3 Gently pull the front bezel assembly up to expose the internal components. If you feel any tension while pulling the bezel assembly—examine for any tangled or stuck cables. If the LVDS cable is secured with a clip, release the clip to free the LVDS cable.



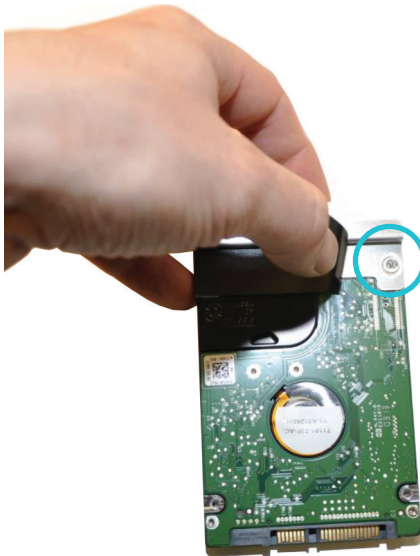
Release the clip to free the LVDS cable.

- 4 Remove the screw that secures the HDD to the rear cover and take the HDD out by pulling it.



- Remove the screw and pull the HDD out.

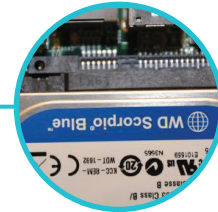
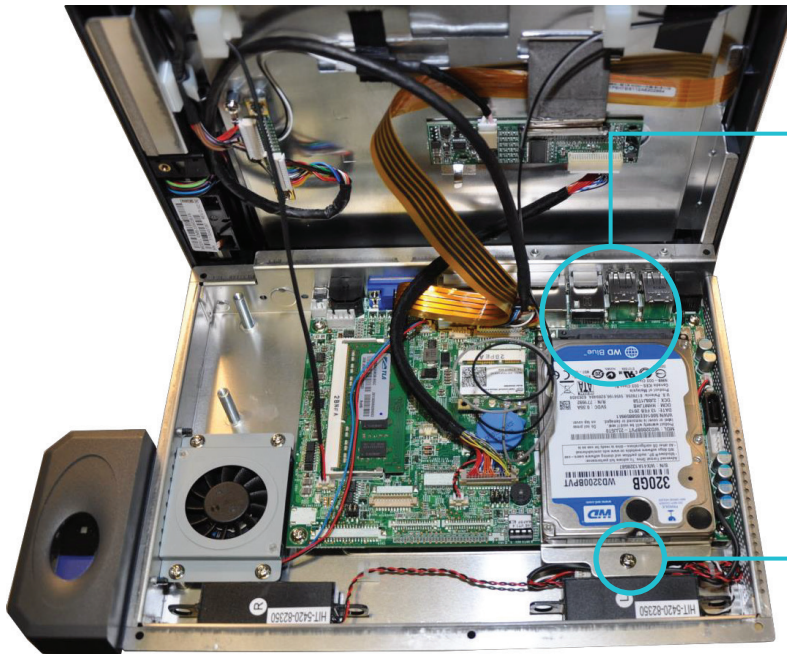
- 5 Take off the HDD bracket from the hard drive by removing 2 screws (gently pull up the plastic that covers the screws).



- Pull one side of the plastic cover and remove the screw, pull the other side of the plastic cover and remove the second screw.

- 6 Attach the HDD bracket to the new HDD (front of the HDD, reverse of step 5).

- 7 Install the new HDD (align the Sata connector and slide the HDD in), make sure the Sata is plugged in and the HDD bracket screw hole is aligned with the rear cover screw hole. Secure the HDD with the screw.

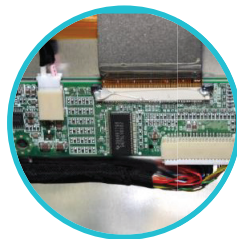
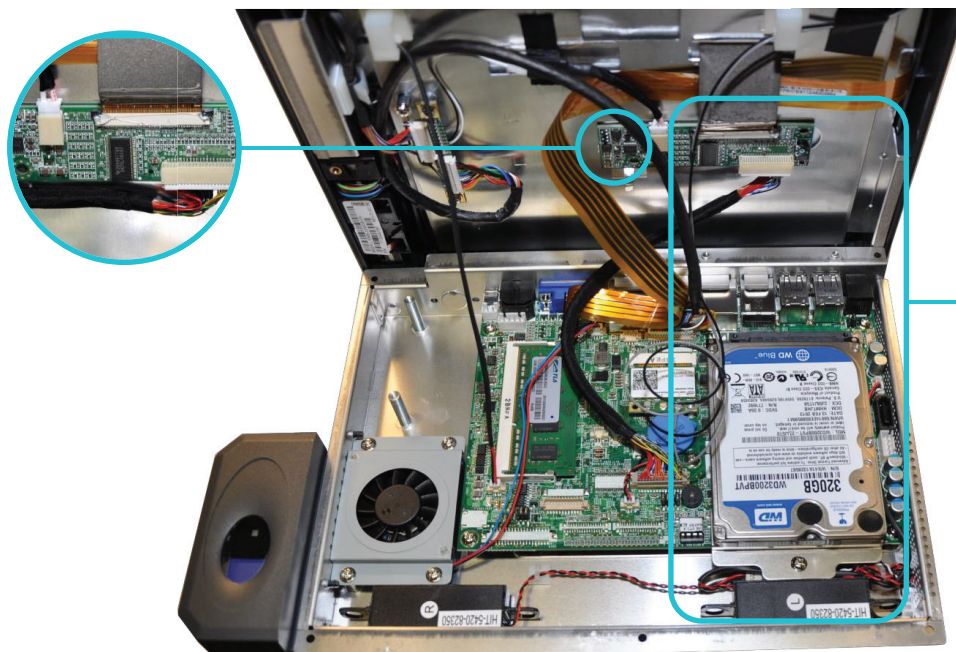


Ensure the Sata is connected.

Secure the HDD with the silver screw.

- 8 Put the front bezel assembly and the rear cover together.

Make sure no cables are caught between the HDD and front bezel assembly, as this can permanently damage the hard drive. Clip the LVDS cable.



Cable Free Area, make sure LVDS and MSR cable are not caught up between the HDD and the front bezel assembly.

- 9 Secure the bezel and the rear cover with the 6 black screws. The assembly is complete.

